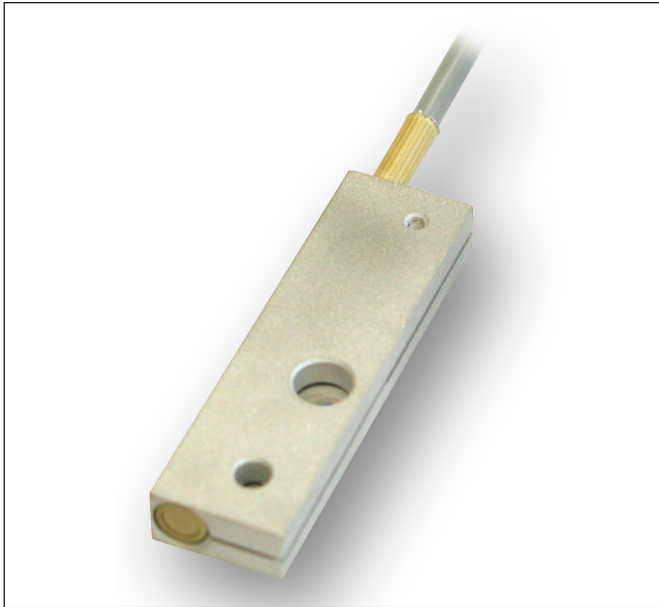
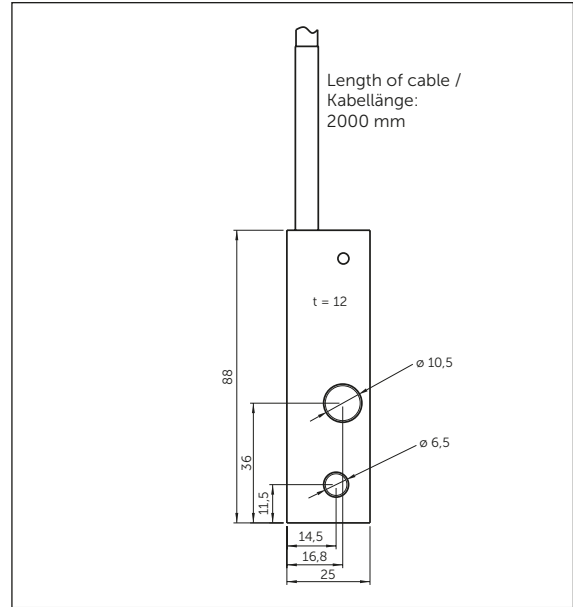
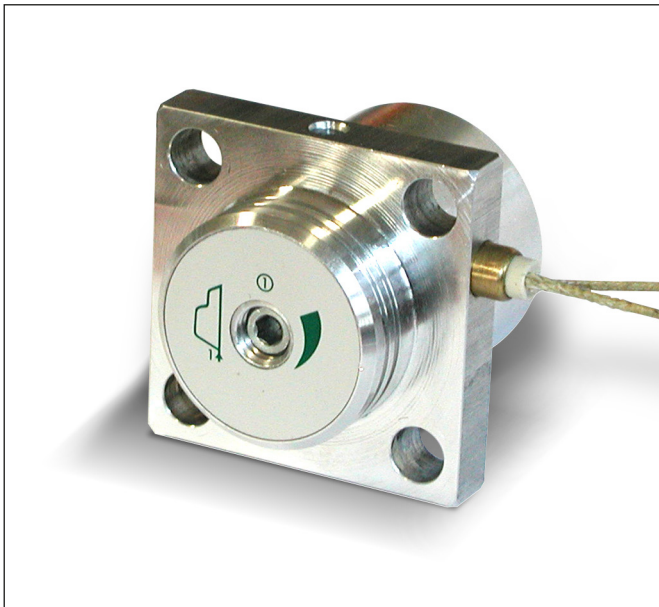


**GK****Valve Heater****(GB)**

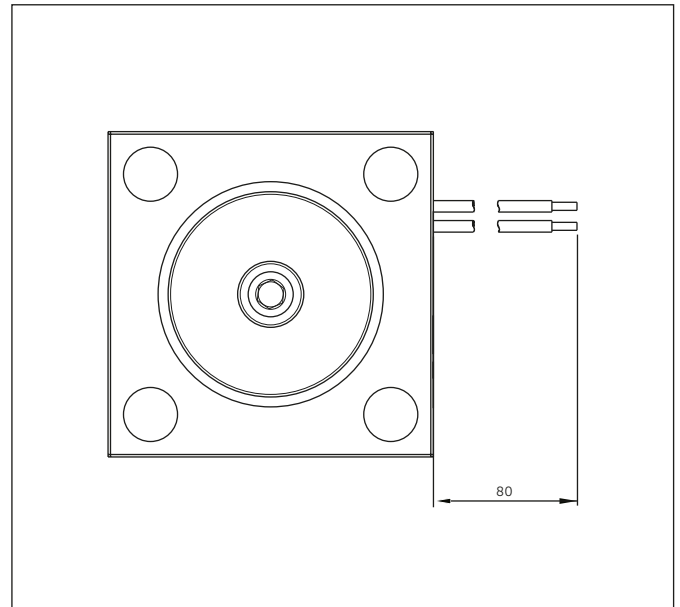
For heating EV and KV valves.  
 Also for heating other flat surfaces.  
 Cable length 2 meter (6,6').  
 100% continuous duty.  
 Controlled by external thermostat or timer.  
 Power consumption: 15 W.  
 = types: 12 V, 24 V, 185 V.  
 ~ types: 115 V, 230 V.

**Ventilheizung****(D)**

Verwendung zur Heizung der EV und KV-Ventile.  
 Ebenfalls für Fremdfabrikate einsetzbar.  
 Kabellänge 2 Meter.  
 100% ED.  
 Steuerung über externen Thermostat oder Zeitschaltuhr.  
 Leistung: 15 W.  
 =: 12 V, 24 V, 185 V.  
 ~: 115 V, 230 V.

**GK F1****Flange Heater****(GB)**

For heating 1½" and 2" EV-valves.  
 Replaces the standard By Pass flange.  
 100% continuous duty.  
 Controlled by external thermostat or timer.  
 Power consumption: 15 W.  
 = types: 12 V, 24 V, 185 V.  
 ~ types: 115 V, 230 V.

**Ventilheizung****(D)**

Verwendung zur Ventilheizung der EV-Typen 1½" und 2".  
 Wird anstelle des Standard Umlaufflansch eingesetzt.  
 100% ED.  
 Steuerung über externen Thermostat oder Zeitschaltuhr.  
 Leistung: 15 W.  
 =: 12 V, 24 V, 185 V  
 ~: 115 V, 230 V

mai 18

Blain Hydraulics GmbH Tel. +49 7131 28210  
 Pfaffenstrasse 1 Fax +49 7131 282199  
 74078 Heilbronn www.blain.de  
 Germany info@blain.de



GmbH

Designer and Manufacturer of the highest  
 quality control valves & safety components  
 for hydraulic elevators