



Industrie Service

EU-TYPE EXAMINATION CERTIFICATE

According to Annex IV, Part A of Directive 2014/33/EU

Certificate No.: EU-RV 009

Notified Body: TÜV SÜD Industrie Service GmbH
Westendstr. 199
80686 Munich - Germany
Identification No. 0036

Certificate Holder: Blain Hydraulics GmbH
Pfaffenstraße 1
74078 Heilbronn - Germany

Manufacturer of the Test Sample: Blain Hydraulics GmbH
Pfaffenstraße 1
74078 Heilbronn - Germany
(Manufacturer of Serial Production - see Enclosure)

Product: Rupture valve as protection against falling of the car in hydraulic lifts

Type: R10 ½"


Directive: 2014/33/EU

Reference Standards: EN 81-20:2020
EN 81-50:2020

Test report: No. EU-RV009-019 dated 2021-04-20

Outcome: The product conforms to the essential health and safety requirements of the mentioned Directive if the requirements of the annex to this EU-type examination certificate are kept.

Date of Issue: 2021-04-20


Achim Janocha

Notified Body LCC



Annex to the EU-Type Examination Certificate
No. EU-RV 009 of 2021-04-20



1 Scope of application

1.1 Rupture valve as protection against falling of the car in hydraulic lifts, type R10 ½"

1.2 Technical Data

Permissible nominal flow rate	4 - 90	l/min
Pressure range	10 - 100	bar
Operating viscosity	15 - 400	cSt
Temperature range	0 - 65	°C

2 Conditions

- 2.1 For identification and information about the principal construction and mode of operation of the tested and approved test sample, the approval drawing no. R10 0,5 a dated 2006-11-06 with modification index 'a' dated 2021-02-01 (sheet 1) with certification stamp dated 2021-04-20 must be attached to the EU-type examination certificate and its annex.
- 2.2 The connection and setting of the rupture valves must be carried out in accordance with the manufacturer's R10 operating instructions with certification stamp dated 2021-04-20.
- 2.3 Hydraulic fluids recommended by the manufacturer must be used. Hydraulic fluids with a specification outside the scope of the rupture valve are not permitted.
- 2.4 In the case of rupture valves that are not directly attached to the cylinder, the connection between the cylinder and the rupture valve must be made via by calculation proven short rigid pipes (pressure hoses are not permitted).
- 2.5 The EU-type examination certificate may only be used in combination with the corresponding annex and enclosure (List of authorized manufacturers of the serial production). The enclosure will be updated immediately after any change by the certification holder.

3 Remarks

3.1 This EU-type examination certificate has been issued in accordance with or on basis of the following standards:

- EN 81-20:2014 (D), Number 5.6.3.8
- EN 81-50:2014 (D), Number 5.9
- EN 81-20:2020 (D), Number 5.6.3.8
- EN 81-50:2020 (D), Number 5.9

A revision of this EU-type examination certificate is inevitable in case of changes or additions of the above-mentioned standards or of changes of state of the art.

3.2 The test results only relate to the safety component "rupture valve" and the associated EU-type examination.

3.3 At the rupture valve, there shall be a label with the information necessary for the component's identification with the name of the manufacturer, EU-type examination sign and details of type.

**Enclosure to the EU-Type Examination Certificate
No. EU-RV 009 of 2021-04-20**



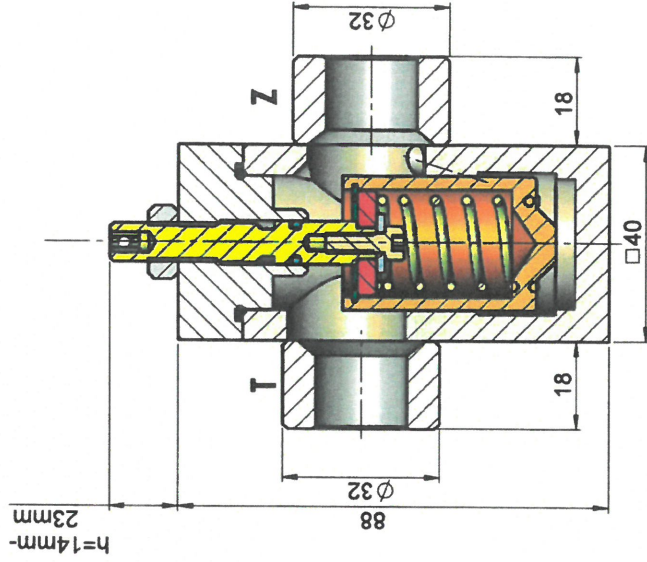
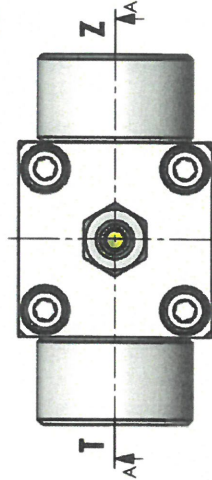
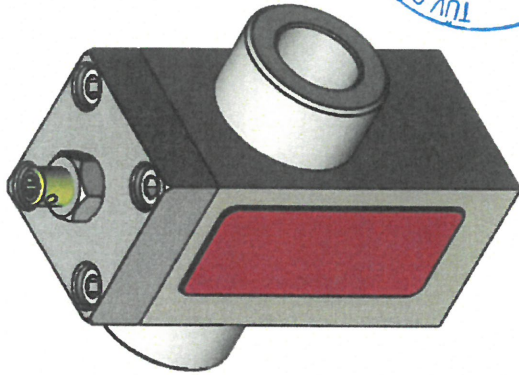
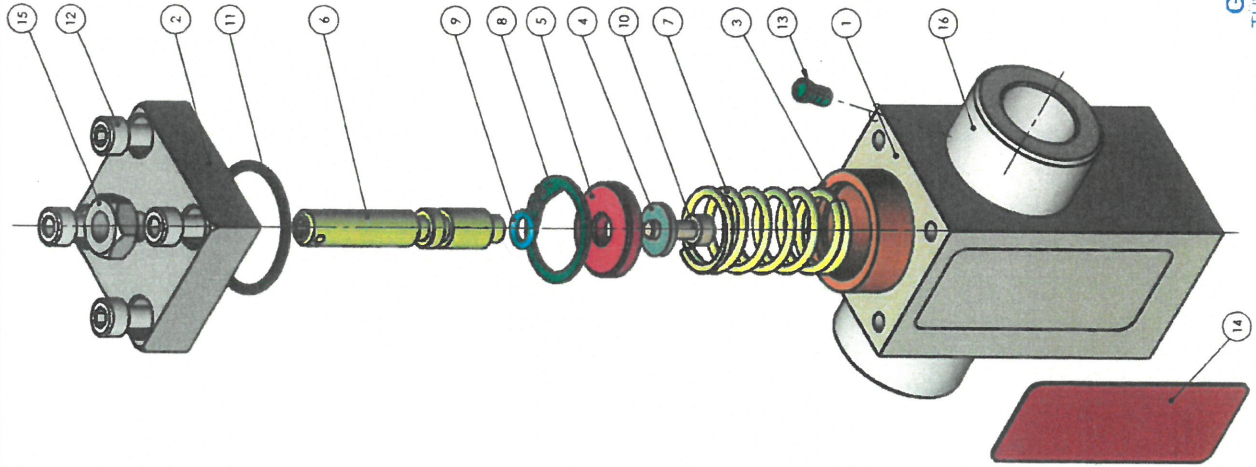
Industrie Service

Authorised Manufacturer of Serial Production – Production Sites (valid from: 2021-02-03):

Company	Blain Hydraulics GmbH
Address	Pfaffenstraße 1 74078 Heilbronn - Germany

- END OF DOCUMENT -

R10 1/2" Stückliste + Explosionsansicht



20. APR. 2021

GEPRÜFT / APPROVED
TUV SUD Industrie Service GmbH
Prüflaboratorium für Produkte der Fluidtechnik
Westendstraße 148
80559 München
Sachverständigenamt

Nr.	Benennung	Zeichnungsnummer	Material	Artikelnummer/Stk.
1	Gehäuse R10 1/2"	R 109	1.0570 (S355J2G3)	103686 1
2	Deckel R10 0,5"	R 119	3.1845 (EN AW-2007)	103728 1
3	Kolben R10 1/2"	R 129	1.0718 (11SMnPb30) blauverzinkt	103732 1
4	Konfigel-Schabe DIN7349 4.3 blauverzinkt	DIN7349 4.3 blauverzinkt	1.0718 (11SMnPb30) blauverzinkt	100041 1
5	Vorspannscheibe für R10	R 148	1.0718 (11SMnPb30)	103767 1
6	Stellschraube R10 1/2"	R 139 P	1.0718 (11SMnPb30)	103751 1
7	Feder	F 108	Federstahl EN 10270-1 SH	100142 1
8	Sicherungsgang DIN 471 22x1,0	DIN 471 22x1,0	1.0570 (S355J2G3)	100032 1
9	O-Ring 5.28x1.78 NBR 60 Shore A	O-Ring 5.28x1.78 NBR	NBR (60 Shore A)	100246 1
10	Zylinderschraube DIN912 M4x12 schwarzverzinkt	DIN912 M4x12 schwarzverzinkt	schwarzverzinkt	100080 1
11	O-Ring 26x2 NBR 70	O-Ring 26x2 NBR	NBR	100226 1
12	Zylinderschraube DIN912 M5x16 schwarzverzinkt	DIN912 M5x16 schwarzverzinkt	schwarzverzinkt	100087 4
13	Filler-Düse	R 165 0.8	Aluminium mit Kleber 3M 468	103777 1
14	Typenschild mit CE 0036	EV 148 CE 0036	Aluminium mit Kleber 3M 468	105718 1
15	Sechskantmutter DIN 934 M8 blauverzinkt	DIN934 M8 blauverzinkt	blauverzinkt	100126 1
16	Muffe zylindrisch R10 1/2"	RA 156	1.0570 (S355J2G3)	103816 2

Montag, 1. Februar 2021 15:25:51		F. Fauder		grafisch: Fremdfeldern: DIN ISO 2768m		Ungelähren Gewicht in Gramm:	
Werkstoff:		Datum		Name		Benennung	
gez. 06.11.06		PM		1:1		R 10 0,5"	
Rohmaße:		gepr.		gepr.		R 10 0,5"	
Blain		103946		Art.-Nr.:		Zeichnungs-Nr.:	
Blain Hydraulics GmbH		www.blain.de					