



Industrie Service

EU-TYPE EXAMINATION CERTIFICATE

According to Annex IV, Part A of Directive 2014/33/EU

Certificate No.: EU-RV 018

Notified Body: TÜV SÜD Industrie Service GmbH
Westendstr. 199
80686 Munich - Germany
Identification No. 0036

Certificate Holder: Blain Hydraulics GmbH
Pfaffenstraße 1
74078 Heilbronn - Germany

Manufacturer of the Test Sample: Blain Hydraulics GmbH
Pfaffenstraße 1
74078 Heilbronn - Germany
(Manufacturer of Serial Production - see Enclosure)

Product: Rupture valve as protection against falling of the car in hydraulic lifts

Type: RSL 1½"

Directive: 2014/33/EU

Reference Standards: EN 81-20:2020
EN 81-50:2020

Test report: No. EU-RV009-019 dated 2021-04-20

Outcome: The product conforms to the essential health and safety requirements of the mentioned Directive if the requirements of the annex to this EU-type examination certificate are kept.

Date of Issue: 2021-04-20


Achim Janocha

Notified Body LCC



Annex to the EU-Type Examination Certificate
No. EU-RV 018 of 2021-04-20



1 Scope of application

1.1 Rupture valve as protection against falling of the car in hydraulic lifts, type RSL 1½"

1.2 Technical Data

Permissible nominal flow rate	100 - 425	l/min
Pressure range	10 - 100	bar
Operating viscosity	15 - 400	cSt
Temperature range	0 - 65	°C

2 Conditions

- 2.1 For identification and information about the principal construction and mode of operation of the tested and approved test sample, the approval drawing no. RSL 126 a dated 2020-10-01 with modification index 'a' dated 2021-02-01 (sheet 1) with certification stamp dated 2021-04-20 must be attached to the EU-type examination certificate and its annex.
- 2.2 The connection and setting of the rupture valves must be carried out in accordance with the manufacturer's RSL operating instructions with certification stamp dated 2021-04-20.
- 2.3 Hydraulic fluids recommended by the manufacturer must be used. Hydraulic fluids with a specification outside the scope of the rupture valve are not permitted.
- 2.4 In the case of rupture valves that are not directly attached to the cylinder, the connection between the cylinder and the rupture valve must be made via by calculation proven short rigid pipes (pressure hoses are not permitted).
- 2.5 The EU-type examination certificate may only be used in combination with the corresponding annex and enclosure (List of authorized manufacturers of the serial production). The enclosure will be updated immediately after any change by the certification holder.

3 Remarks

- 3.1 This EU-type examination certificate has been issued in accordance with or on basis of the following standards:
- EN 81-20:2014 (D), Number 5.6.3.8
 - EN 81-50:2014 (D), Number 5.9
 - EN 81-20:2020 (D), Number 5.6.3.8
 - EN 81-50:2020 (D), Number 5.9
- A revision of this EU-type examination certificate is inevitable in case of changes or additions of the above-mentioned standards or of changes of state of the art.
- 3.2 The test results only relate to the safety component "rupture valve" and the associated EU-type examination.
- 3.3 At the rupture valve, there shall be a label with the information necessary for the component's identification with the name of the manufacturer, EU-type examination sign and details of type.

**Enclosure to the EU-Type Examination Certificate
No. EU-RV 018 of 2021-04-20**



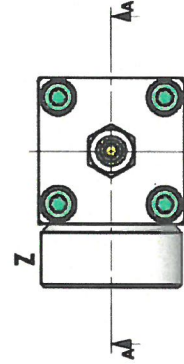
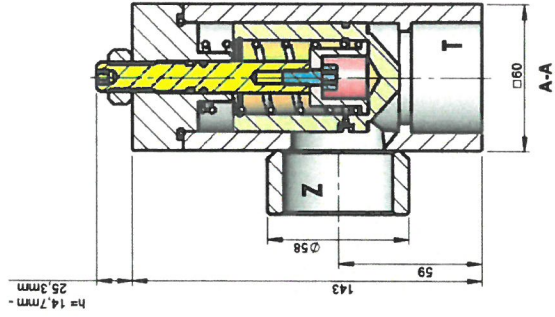
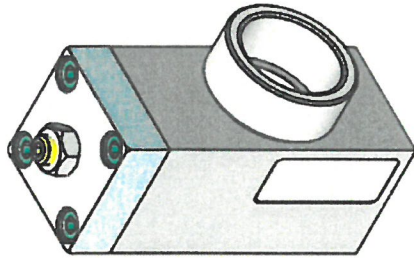
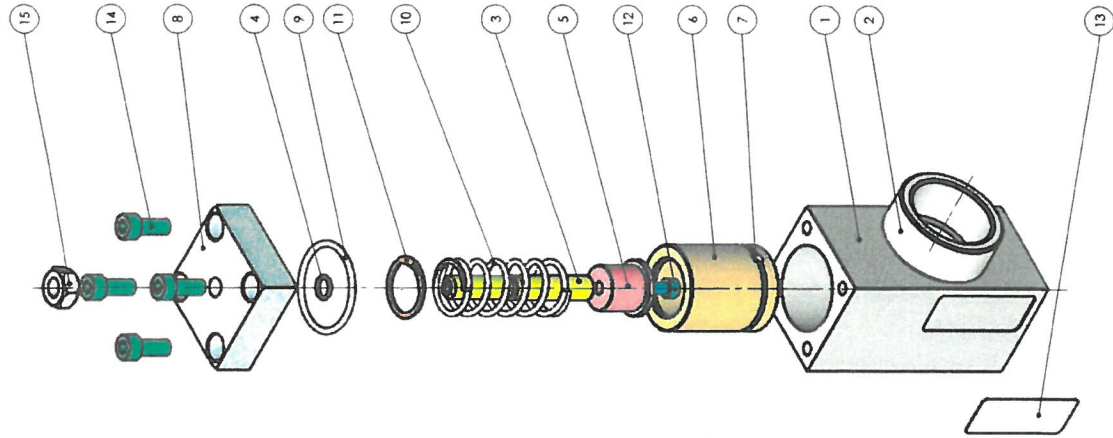
Industrie Service

Authorised Manufacturer of Serial Production – Production Sites (valid from: 2021-02-03):

Company	Blain Hydraulics GmbH
Address	Pfaffenstraße 1 74078 Heilbronn - Germany

- END OF DOCUMENT -

RSL 1 1/2" Stückliste + Explosionsansicht



Nr.	Benennung	Zeichnungsnummer	Material	Artikelnummer/ Stk.
1	Gehäuse 1 1/2" Sitzausführung	RSL 111	1.0570 (S355J2G3)	103905 1
2	Muffe zylindrisch R10 1.5"	RA 151	1.0570 (S355J2G3)	103809 1
3	Stellschraube 1/2" - 1 1/2"	RS 140	1.0718 (11SMnPb30)	103897 1
4	O-Ring 9x2 NBR 70	O-Ring 9x2 NBR	NBR	100274 1
5	Vorspannscheibe 1 1/2"	RS 149	1.0736 (11SMnPb30)	103900 1
6	Kolben RS 1 1/2" Sitzausführung	RS 131	1.0718 (11SMnPb30)	103894 1
7	Filler	R 165 Filler	Drahtgewebe D=0.2 MW 0.32 Mat. VZA 4301	103775 1
8	Deckel R10 1.5"	R 121	3.1645 (EN AW-2007)	103728 1
9	O-Ring 42x3 NBR 70	O-Ring 42x3 NBR	NBR	100241 1
10	Feder	F 62	Federstahldraht EN 10270-1 SH	100148 1
11	Sicherungsring DIN 472 30x1.2	DIN 472 30x1.2	1.1248 C75S	500281 1
12	Zylinderschraube DIN912 M6x18 schwarzverzinkt	DIN912 M6x18 schwarzverzinkt	schwarzverzinkt	100089 1
13	Typenschild mit CE	EV 148 CE	Aluminium mit Kleber 3M 468	105719 1
14	Zylinderschraube DIN912 M8x20 schwarzverzinkt	DIN912 M8x20 schwarzverzinkt	schwarzverzinkt	100101 4
15	Sackskantermutter DIN 934 M12 blauverzinkt	DIN934 M12 blauverzinkt	blauverzinkt	100122 1

20. APR. 2021

GEPRÜFT / APPROVED
TUV SUD Industrie Service GmbH

Prüflaboratorium für Produkte der Niederdruckhydraulik

Westendstraße 99
80509 München
Sachverständigenbüro
Sachverständigenbüro

Montag, 1. Februar 2021 16:02:46		F. Fauder		draht: Fremdböhrer DIN ISO 216mm		Ungelötetes Gewicht in Gramm:	
Werkstoff:		Datum		Name		Benennung:	
Rohmaße:		01.10.2020		MB		RSL 1.5"	
gepr.		gepr.		1:2		Zeichnungs-Nr.:	
						RSL 126 α	

Blain Hydraulics GmbH www.blain.de