



Industrie Service

EU-TYPE EXAMINATION CERTIFICATE

According to Annex IV, Part A of Directive 2014/33/EU

Certificate No.: EU-RV 017

Notified Body: TÜV SÜD Industrie Service GmbH
Westendstr. 199
80686 Munich - Germany
Identification No. 0036

Certificate Holder: Blain Hydraulics GmbH
Pfaffenstraße 1
74078 Heilbronn - Germany

Manufacturer of the Test Sample: Blain Hydraulics GmbH
Pfaffenstraße 1
74078 Heilbronn - Germany
(Manufacturer of Serial Production - see Enclosure)

Product: Rupture valve as protection against falling of the car in hydraulic lifts

Type: RSL 1"

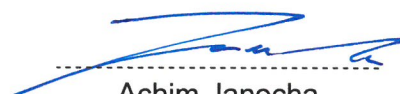
Directive: 2014/33/EU

Reference Standards: EN 81-20:2020
EN 81-50:2020

Test report: No. EU-RV009-019 dated 2021-04-20

Outcome: The product conforms to the essential health and safety requirements of the mentioned Directive if the requirements of the annex to this EU-type examination certificate are kept.

Date of Issue: 2021-04-20


Achim Janocha

Notified Body LCC



Annex to the EU-Type Examination Certificate
No. EU-RV 017 of 2021-04-20



1 Scope of application

1.1 Rupture valve as protection against falling of the car in hydraulic lifts, type RSL 1"

1.2 Technical Data

Permissible nominal flow rate	50 - 175	l/min
Pressure range	10 - 100	bar
Operating viscosity	15 - 400	cSt
Temperature range	0 - 65	°C

2 Conditions

- 2.1 For identification and information about the principal construction and mode of operation of the tested and approved test sample, the approval drawing no. RSL 123 a dated 2020-10-01 with modification index 'a' dated 2021-01-25 (sheet 1) with certification stamp dated 2021-04-20 must be attached to the EU-type examination certificate and its annex.
- 2.2 The connection and setting of the rupture valves must be carried out in accordance with the manufacturer's RSL operating instructions with certification stamp dated 2021-04-20.
- 2.3 Hydraulic fluids recommended by the manufacturer must be used. Hydraulic fluids with a specification outside the scope of the rupture valve are not permitted.
- 2.4 In the case of rupture valves that are not directly attached to the cylinder, the connection between the cylinder and the rupture valve must be made via by calculation proven short rigid pipes (pressure hoses are not permitted).
- 2.5 The EU-type examination certificate may only be used in combination with the corresponding annex and enclosure (List of authorized manufacturers of the serial production). The enclosure will be updated immediately after any change by the certification holder.

3 Remarks

- 3.1 This EU-type examination certificate has been issued in accordance with or on basis of the following standards:
- EN 81-20:2014 (D), Number 5.6.3.8
 - EN 81-50:2014 (D), Number 5.9
 - EN 81-20:2020 (D), Number 5.6.3.8
 - EN 81-50:2020 (D), Number 5.9
- A revision of this EU-type examination certificate is inevitable in case of changes or additions of the above-mentioned standards or of changes of state of the art.
- 3.2 The test results only relate to the safety component "rupture valve" and the associated EU-type examination.
- 3.3 At the rupture valve, there shall be a label with the information necessary for the component's identification with the name of the manufacturer, EU-type examination sign and details of type.

**Enclosure to the EU-Type Examination Certificate
No. EU-RV 017 of 2021-04-20**



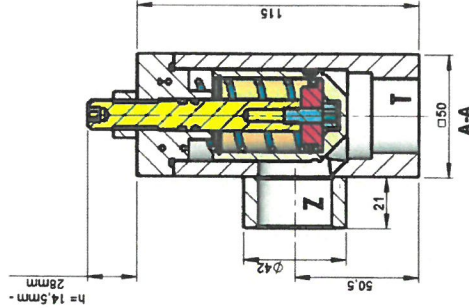
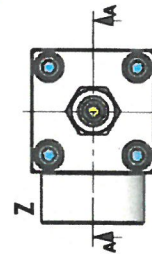
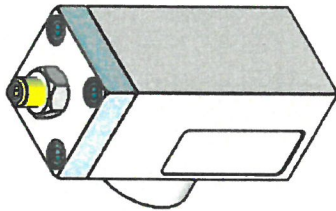
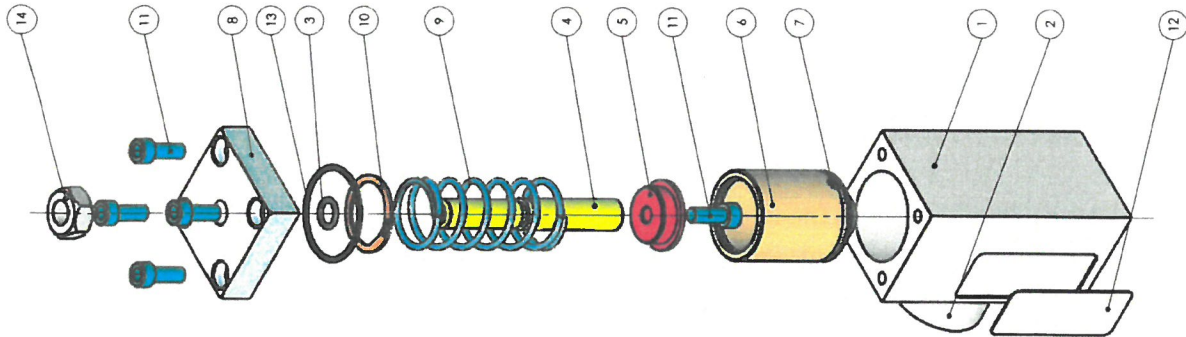
Industrie Service

Authorised Manufacturer of Serial Production – Production Sites (valid from: 2021-02-03):

Company	Blain Hydraulics GmbH
Address	Pfaffenstraße 1 74078 Heilbronn - Germany

- END OF DOCUMENT -

RSL 1" Stückliste + Explosionsansicht



20. APR. 2021

GEPRÜFT / APPROVED
TUV SÜD Industrie Service GmbH
Prüflaboratorium für Produkte der Fördertechnik



Westendstraße 189
80699 München
Sachverständigen-Expert

Nr.	Benennung	Zeichnungsnummer/Artikelnummer	Material	Stk./Artikelnummer
1	Gehäuse 1" Sitzausführung	RSL 110	1.0570 (S355J2G3)	1 103901
2	Muffe zylindrisch R10 1"	RA 150-1	1.0570 (S355J2G3)	1 103808
3	O-Ring 9x2 NBR 70	O-Ring 9x2 NBR	NBR	1 100274
4	Stellschraube 1/2" - 1 1/2"	RS 140	1.0718 (11SMnPb30)	1 103897
5	Vorspannschraube 3/4" - 1"	RS 148	1.0736 (11SMnPb30)	1 103899
6	Kolben RS 3/4" - 1" Sitzausführung	RS 130	1.0718 (11SMnPb30)	1 103892
7	Filter	R 165 Filter	Drahtgewebe D=0.2 MW 0.32 Mat. V2A 4301	1 103775
8	Deckel R10 3/4 & 1"	R 120	3.1645 (EN AW-2007)	1 103727
9	Feder	F 73	Federstahldraht EN 10270-1 SH	1 100160
10	Sicherungsmutter DIN 472 30x1.2	DIN 472 30x1.2	1.1248 C75S	1 500281
11	Zylinderschraube DIN912 M6x16 schwarzverzinkt	DIN912 M6x16 schwarzverzinkt	schwarzverzinkt	5 100089
12	Typenschild mit CE	EV 148 CE	Aluminium mit Kleber 3M 468	1 105719
13	O-Ring 35x2 NBR 70	O-Ring 35x2 NBR	NBR	1 100234
14	Sechskantmutter DIN 934 M12 blauverzinkt	DIN934 M12 blauverzinkt	blauverzinkt	1 100122

Montag, 25. Januar 2021 17:00:14	F. Föhrder	grafisch: Feinbildbearbeitung DIN ISO 2768m	Ungeladenes Gewicht in Gramm:
Werkstoff:	Datum	Name	Benennung:
gez: 01.10.2020	MB	1:2	RSL 1"
gepr:			Zeichnungs-Nr.:
			RSL 123 0