



Industrie Service

# EU-TYPE EXAMINATION CERTIFICATE

According to Annex IV, Part A of Directive 2014/33/EU

**Certificate No.:** EU-RV 019

**Notified Body:** TÜV SÜD Industrie Service GmbH  
Westendstr. 199  
80686 Munich - Germany  
Identification No. 0036

**Certificate Holder:** Blain Hydraulics GmbH  
Pfaffenstraße 1  
74078 Heilbronn - Germany

**Manufacturer of the Test Sample:** Blain Hydraulics GmbH  
Pfaffenstraße 1  
74078 Heilbronn - Germany  
(Manufacturer of Serial Production - see Enclosure)

**Product:** Rupture valve as protection against falling of the car in hydraulic lifts

**Type:** RSL 2"

**Directive:** 2014/33/EU

**Reference Standards:** EN 81-20:2020  
EN 81-50:2020

**Test report:** No. EU-RV009-019 dated 2021-04-20

**Outcome:** The product conforms to the essential health and safety requirements of the mentioned Directive if the requirements of the annex to this EU-type examination certificate are kept.

**Date of Issue:** 2021-04-20



Achim Janocha

Notified Body LCC



**Annex to the EU-Type Examination Certificate**  
**No. EU-RV 019 of 2021-04-20**



**1 Scope of application**

1.1 Rupture valve as protection against falling of the car in hydraulic lifts, type RSL 2"

1.2 Technical Data

<b>Permissible nominal flow rate</b>	<b>250 - 800</b>	<b>l/min</b>
<b>Pressure range</b>	<b>10 - 100</b>	<b>bar</b>
<b>Operating viscosity</b>	<b>15 - 400</b>	<b>cSt</b>
<b>Temperature range</b>	<b>0 - 65</b>	<b>°C</b>

**2 Conditions**

- 2.1 For identification and information about the principal construction and mode of operation of the tested and approved test sample, the approval drawing no. RSL 129 a dated 2020-10-01 with modification index 'a' dated 2021-01-22 (sheet 1) with certification stamp dated 2021-04-20 must be attached to the EU-type examination certificate and its annex.
- 2.2 The connection and setting of the rupture valves must be carried out in accordance with the manufacturer's RSL operating instructions with certification stamp dated 2021-04-20.
- 2.3 Hydraulic fluids recommended by the manufacturer must be used. Hydraulic fluids with a specification outside the scope of the rupture valve are not permitted.
- 2.4 In the case of rupture valves that are not directly attached to the cylinder, the connection between the cylinder and the rupture valve must be made via by calculation proven short rigid pipes (pressure hoses are not permitted).
- 2.5 The EU-type examination certificate may only be used in combination with the corresponding annex and enclosure (List of authorized manufacturers of the serial production). The enclosure will be updated immediately after any change by the certification holder.

**3 Remarks**

- 3.1 This EU-type examination certificate has been issued in accordance with or on basis of the following standards:
- EN 81-20:2014 (D), Number 5.6.3.8
  - EN 81-50:2014 (D), Number 5.9
  - EN 81-20:2020 (D), Number 5.6.3.8
  - EN 81-50:2020 (D), Number 5.9
- A revision of this EU-type examination certificate is inevitable in case of changes or additions of the above-mentioned standards or of changes of state of the art.
- 3.2 The test results only relate to the safety component "rupture valve" and the associated EU-type examination.
- 3.3 At the rupture valve, there shall be a label with the information necessary for the component's identification with the name of the manufacturer, EU-type examination sign and details of type.

**Enclosure to the EU-Type Examination Certificate  
No. EU-RV 019 of 2021-04-20**



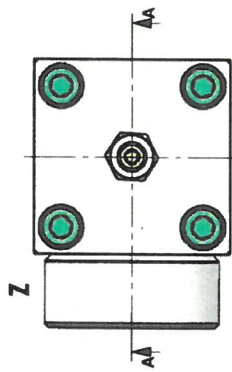
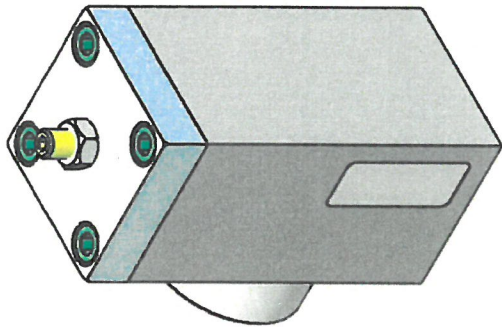
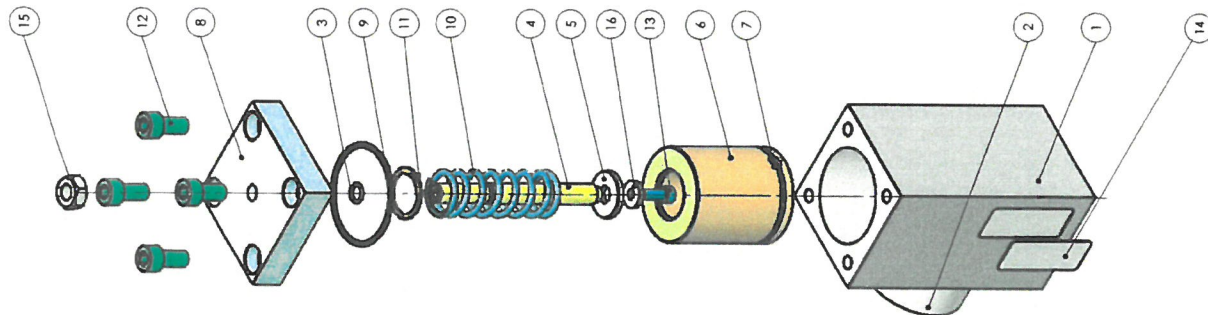
Industrie Service

**Authorised Manufacturer of Serial Production – Production Sites (valid from: 2021-02-03):**

**Company** Blain Hydraulics GmbH  
**Address** Pfaffenstraße 1  
74078 Heilbronn - Germany

- END OF DOCUMENT -

# RSL 2" Stückliste + Explosionsansicht

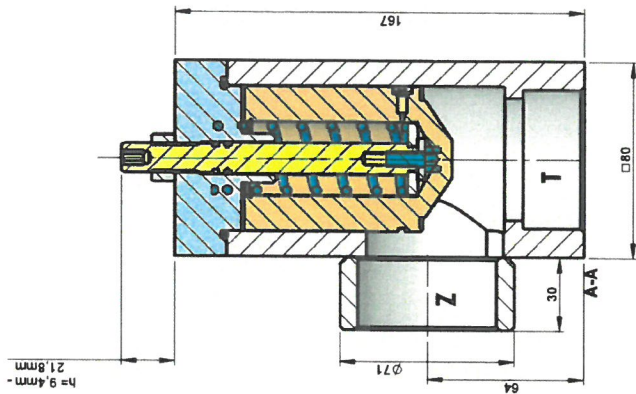


20. APR. 2021

GEPRÜFT / APPROVED  
TUV SUD Industrie Service GmbH  
Prüflaboratorium für Produkte der Elektrotechnik

Westendstraße 199  
80699 München  
Sachverständiger Experte

Nr.	Benennung	Zeichnungsnummer/Artikelnummer	Material	Stk. / Artikeleintr.
1	Gehäuse RSL 2" Sitzausführung	RSL 112	1.0570 (S355J2G3)	1 103907
2	Muffe zylindrisch R10 2"	RA 152	1.0570 (S355J2G3)	1 103810
3	O-Ring 9x2 NBR 70	O-Ring 9x2 NBR	NBR	1 100274
4	Stellschraube RS 2"	RS 142	1.0718 (11SMnPb30)	1 103898
5	Vorspannscheibe für R10 0,75-1,5-2"	R 145	1.0718 (11SMnPb30)	1 103764
6	Kolben RS 2" Sitzausführung	RS 132	1.0718 (11SMnPb30)	1 103896
7	Filter	R 165 Filter	Drahtgewebe D=0,2 MW/0,32 Mat. VZA 4301	1 103775
8	Deckel R10 2"	R 122	3.1645 (EN AW-2007)	1 103729
9	O-Ring 58x3 NBR 70	O-Ring 58x3 NBR	NBR	1 100253
10	Feder	F 74	Federstahldraht EN 10270-1 SH	1 100161
11	Sicherungsring DIN 472 30x1,2	DIN 472 30x1,2	1.1248 C75S	1 500281
12	Zylinderschraube DIN 912 M10x20 schwarzverzinkt	DIN 912 M10x20 schwarzverzinkt	schwarzverzinkt	4 100073
13	Zylinderschraube DIN 912 M6x16 schwarzverzinkt	DIN 912 M6x16 schwarzverzinkt	schwarzverzinkt	1 100089
14	Typenschild mit CE	EV 148 CE	Aluminium mit Kleber 3M 468	1 105719
15	Sechskantmutter DIN 934 M12 blauverzinkt	DIN 934 M12 blauverzinkt	blauverzinkt	1 100122
16	Koffel-Scheibe DIN 7349 6,4	DIN 7349 6,4 blauverzinkt	blauverzinkt	1 100042



Freitag, 22. Januar 2021 14:45:14	F. Bänder	graffier: Fremdlieferant DIN ISO 2746m	Ungefähres Gewicht in Gramm:
Werkstoff:	Datum	Name	Benennung
gez 01.10.2020	MB	1:2	RSL 2"
gepr.			
Art.-Nr.:	105021		
Zeichnungs-Nr.:	RSL 129		