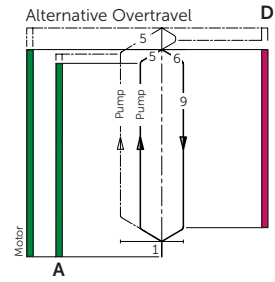
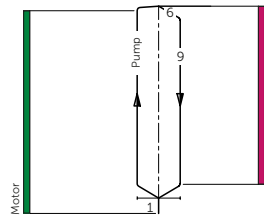
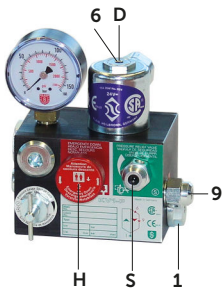


## Control Valves for Small Lifts



### Control Elements

- A Solenoid Up
- D Solenoid Down
- F Main Filter
- H Manual Lowering
- L Gauge Shut Off Cock
- U Bypass Valve
- V Check Valve
- Y Down Levelling Valve

### Adjustments

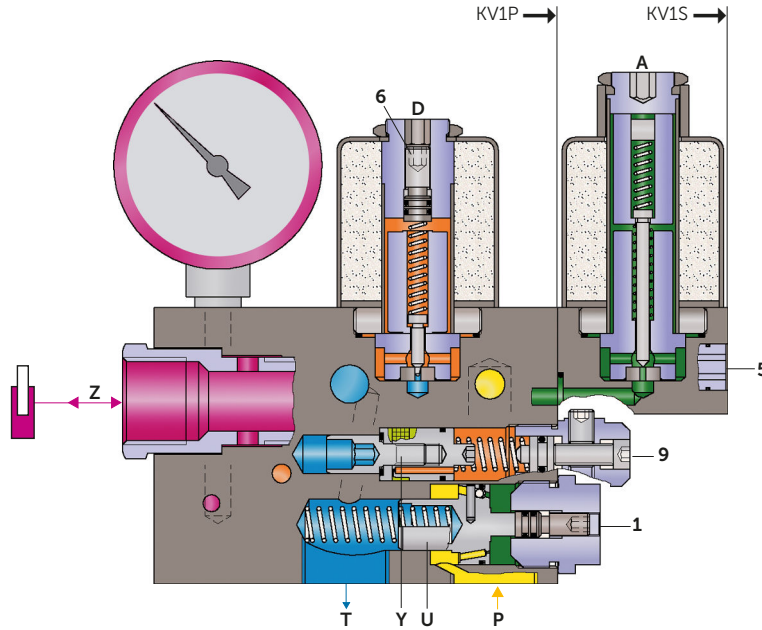
- 1 Bypass
- 5 Up Soft Stop
- 6 Down Acceleration
- 9 Down Speed
- S Relief Valve

### Connections

- P Pump
- T Tank
- Z Cylinder

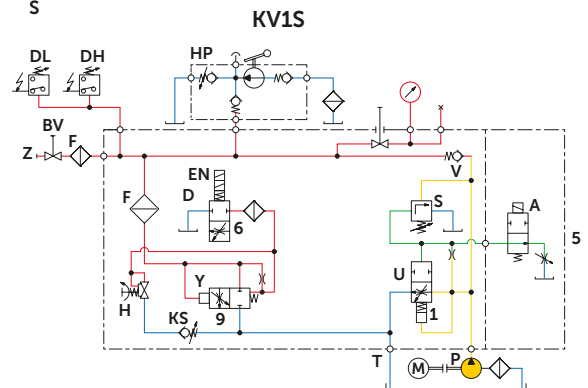
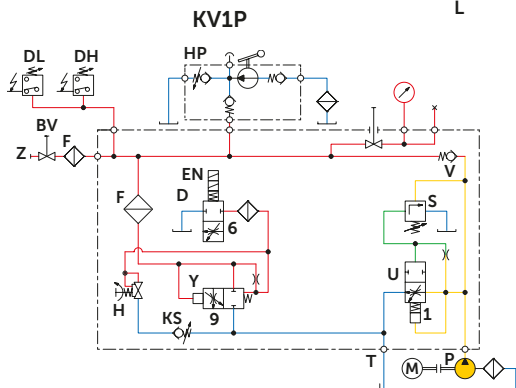
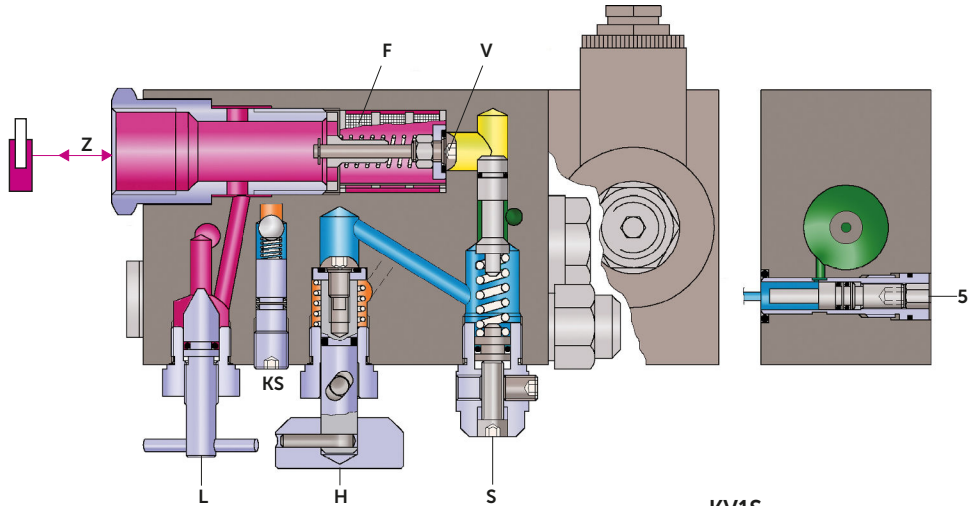
### Options

- BV Ball Valve built in
- EN Emergency Power Solenoid
- HP Hand Pump H 13
- KS Slack Rope Valve
- DH Pressure Switch 10-100 bar
- DL Pressure Switch 1-10 bar
- CSA CSA Solenoids
- HA Manual Down Speed Adj.
- RS Pipe Rupture Valve
- ES Pipe Rupture Valve Switch



### Pressures

- Pump
- Pilot Up
- Tank
- Cylinder
- Pilot Down



The finest elevator control valves

Blain Hydraulics GmbH · Pfaffenstrasse 1 · 74078 Heilbronn · Germany  
 Tel. +49 7131 28210 · Fax +49 7131 282199 · www.blain.de · info@blain.de